

RESOLUTION NO. 2006-283

**A RESOLUTION OF THE CITY COUNCIL OF THE CITY OF ELK GROVE
APPROVING THE GROVE AT LAGUNA RIDGE VILLAGE 3 FINAL MAP
(SUBDIVISION NO. 04-764.03) AND SUBDIVISION IMPROVEMENT AGREEMENT**


BE IT RESOLVED AND ORDERED that the City Council of the City of Elk Grove pursuant to Government Code Section 66458, hereby approves the Final Subdivision Map, a copy of which is hereby attached and made a part of the Resolution; submitted at the Elk Grove City Council meeting in connection with **REYEN & BARDIS COMMUNITIES, INC., A CALIFORNIA CORPORATION** and the subdivision designated as The Grove at Laguna Ridge Village 3 (Subdivision No. 04-764.03).

BE IT FURTHER RESOLVED AND ORDERED that the City Council of the City of Elk Grove hereby approves a Subdivision Improvement Agreement and that the Mayor is hereby authorized and directed to execute a Subdivision Improvement Agreement on behalf of the City of Elk Grove in connection with the above identified subdivision in the form hereto attached, and for all matters incidental thereto, and to do and perform everything necessary to carry out the purpose of this resolution.


PASSED AND ADOPTED by the City Council of the City of Elk Grove on this 8th day of November 2006.



RICK SOARES, MAYOR of the
CITY OF ELK GROVE

ATTEST:


PEGGY E. JACKSON, CITY CLERK

APPROVED AS TO FORM:


ANTHONY B. MANZANETTI,
CITY ATTORNEY

OWNER'S STATEMENT

THE UNDERSIGNED HEREBY CONSENT TO THE PREPARATION AND RECORATION OF THIS FINAL MAP AND OFFERS FOR DEDICATION AND DOES HEREBY DEDICATE TO ANY AND ALL PUBLIC USES, UPON COMPLETION OF IMPROVEMENTS, THE PUBLIC CIRCLES, DRIVES AND WAYS SHOWN HEREON WITHIN THESE BOUNDARIES AND ALSO OFFERS FOR DEDICATION AND DOES HEREBY DEDICATE TO ANY AND ALL PUBLIC USES EASEMENTS FOR THE FOLLOWING SPECIFIC PURPOSES.

- A EASEMENT FOR CONSTRUCTING AND MAINTAINING CENTRALIZED MAIL DELIVERY BOXES, PEDESTALS AND SLABS, TOGETHER WITH ANY AND ALL APPURTENANCES PERTAINING THERETO, INCLUDING PEDESTRIAN ACCESS FOR DELIVERY AND RECEIPT OF MAIL ON, OVER, UNDER AND ACROSS STRIPS OF LAND FIVE (5) FEET IN WIDTH, LYING CONTIGUOUS TO THE RIGHTS-OF-WAY DELINEATED ABOVE AND SHOWN HEREON. THE LOCATION TO BE DETERMINED BY THE U.S. POSTAL SERVICE WITH THE FUTURE PLACEMENT OF MAIL DELIVERY BOXES
B EASEMENTS FOR PLANTING AND MAINTAINING TREES, INSTALLATION AND MAINTENANCE OF ELECTROLIERS, TRAFFIC CONTROL DEVICES, WATER AND GAS PIPES, AND FOR UNDERGROUND WIRES AND CONDUITS FOR ELECTRICAL, TELEPHONE AND TELEVISION SERVICES, TOGETHER WITH ANY AND ALL APPURTENANCES PERTAINING THERETO, ON, OVER, UNDER AND ACROSS THOSE STRIPS OF LAND TWELVE AND ONE-HALF (12.5) FEET IN WIDTH LYING CONTIGUOUS TO THE PUBLIC CIRCLES, DRIVES, AND WAYS, AND AS APPROVED BY THE CITY ENGINEER OF THE CITY OF ELK GROVE, AS SHOWN HEREON, AND DESIGNATED "PUBLIC UTILITY EASEMENT" (P.U.E.)
C RIGHT OF WAY AND EASEMENTS FOR INSTALLATION AND MAINTENANCE OF A PEDESTRIAN WALKWAY, TOGETHER WITH ANY AND ALL APPURTENANCES PERTAINING THERETO ON, OVER, UNDER AND ACROSS LOTS A, B AND C SHOWN HEREON AND DESIGNATED "PEDESTRIAN EASEMENT." SAID STRIPS ARE TO BE KEPT OPEN AND FREE FROM BUILDINGS (P.E.)

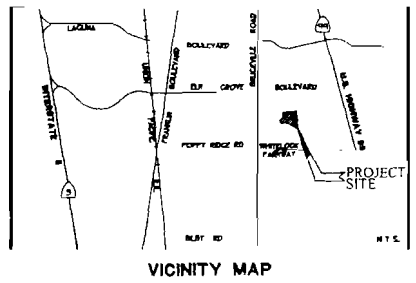
LOTS A, B AND C AS SHOWN HEREON SHALL BE GRANTED IN FEE SIMPLE PER SEPARATE DOCUMENT TO THE CITY OF ELK GROVE FOR LANDSCAPING PURPOSES
LOT D SHOWN HEREON SHALL BE GRANTED IN FEE SIMPLE PER SEPARATE DOCUMENT TO THE CITY OF ELK GROVE FOR PARK PURPOSES

RFYNEN & BARDIS COMMUNITIES, INC
A CALIFORNIA CORPORATION

BY [Signature] DATE 6-30-06
NAME: JOHN L. REYNOLDS
TITLE: CFO

NOTARY'S ACKNOWLEDGMENT

STATE OF CALIFORNIA } SS
COUNTY OF Sacramento
ON THE 30th DAY OF June, 2006, BEFORE ME, Louise Dutton, A NOTARY PUBLIC IN AND FOR SAID COUNTY AND STATE, PERSONALLY APPEARED, John L. Reynolds, IS PERSONALLY KNOWN TO ME OR
[] PROVED TO ME ON THE BASIS OF SATISFACTORY EVIDENCE TO BE THE PERSON WHOSE NAME IS SUBSCRIBED TO THE WITHIN INSTRUMENT AND ACKNOWLEDGED TO ME THAT HE/SHE EXECUTED THE SAME IN HIS/HER AUTHORIZED CAPACITY, AND THAT BY HIS/HER SIGNATURE ON THE INSTRUMENT THE PERSON, OR THE ENTITY ON BEHALF OF WHICH THE PERSON ACTED, EXECUTED THE INSTRUMENT.
WITNESS MY HAND Louise Dutton
PRINTED NAME: Louise Dutton
MY PRINCIPAL PLACE OF BUSINESS IS THE COUNTY OF: Sacramento
MY COMMISSION EXPIRES: 2-25-09
MY COMMISSION NO.: 1554826



CITY ENGINEER'S STATEMENT

I HEREBY STATE THAT I HAVE EXAMINED THIS FINAL MAP OF SUBDMISION NO. 04-764.03 OF THE GROVE AT LAGUNA RIDGE VILLAGE 3 AND FIND IT TO BE SUBSTANTIALLY THE SAME AS THE TENTATIVE MAP CONDITIONALLY APPROVED BY THE PLANNING COMMISSION OF THE CITY OF ELK GROVE, ON MAY 19, 2005, AND ANY APPROVED ALTERATIONS THEREOF; THAT ALL PROVISIONS OF THE SUBDMISION MAP ACT AND LOCAL ORDINANCE HAVE BEEN COMPLIED WITH AND THAT I AM SATISFIED THAT SAID MAP IS TECHNICALLY CORRECT

DATE: ROBERT L LEE
CITY ENGINEER, CITY OF ELK GROVE
R.C.E. # 23078
EXPIRATION DATE 12-31-07

CITY CLERK'S STATEMENT

I, THE CITY CLERK OF THE CITY OF ELK GROVE, HEREBY STATE THE CITY COUNCIL OF THE CITY OF ELK GROVE HAS APPROVED THIS FINAL MAP OF SUBDMISION NO. 04-764.03 OF THE GROVE AT LAGUNA RIDGE VILLAGE 3 AND ACCEPTED, SUBJECT TO IMPROVEMENT, ON BEHALF OF THE PUBLIC, ANY REAL PROPERTY OFFERED FOR DEDICATION FOR PUBLIC USE IN CONFORMITY WITH THE TERMS OF THE OFFER OF DEDICATION, ALL AS SHOWN ON THIS MAP

DATE: PEGGY E JACKSON
CLERK OF THE CITY COUNCIL
CITY OF ELK GROVE, CALIFORNIA

SOILS REPORT

A PRELIMINARY SOILS REPORT WAS PREPARED BY WALLUCE-KUHL & ASSOCIATES, INC., FILE NO. WKA 4021 12, DATED SEPTEMBER 30, 2002 A CDOPY OF THIS REPORT IS ON FILE FOR PUBLIC INSPECTION AT THE PUBLIC WORKS DEPARTMENT OF THE CITY OF ELK GROVE.

SURVEYOR'S STATEMENT

THIS MAP WAS PREPARED BY ME OR UNDER MY DIRECTION AND IS BASED UPON A FIELD SURVEY IN CONFORMANCE WITH THE REQUIREMENTS OF THE SUBDMISION MAP ACT AND LOCAL ORDINANCE AT THE REQUEST OF RFYNEN AND BARDIS (LAGUNA RIDGE) L.P., A CALIFORNIA LIMITED PARTNERSHIP IN APRIL 2005. I HEREBY STATE THAT THIS FINAL MAP SUBSTANTIALLY CONFORMS TO THE CONDITIONALLY APPROVED TENTATIVE MAP; THAT THE MONUMENTS WILL BE OF THE CHARACTER AND WILL OCCUPY THE POSITIONS AS INDICATED AND WILL BE SET BY DECEMBER 2007; AND THAT SAID MONUMENTS WILL BE SUFFICIENT TO ENABLE THE SURVEY TO BE RETRACED. THE NOTES TO ALL CENTERLINE MONUMENTS WILL BE PROVIDED TO THE CITY OF ELK GROVE PRIOR TO THE ABOVE DATE.

THE SUBDMISION WITHIN THE HEAVY BORDER CONTAINS 30.72± ACRES, CONSISTING OF 127 RESIDENTIAL LOTS AND 4 MISCELLANEOUS LOTS

WOOD RODGERS, INC



[Signature]
CRAIG E. SPIESS
P.L.S. 7944 EXP 12-31-07
JUNE 26, 2006
DATE

RECORDER'S STATEMENT

FILED THIS DAY OF 2006, AT M IN BOOK OF MAPS, AT PAGE AT THE REQUEST OF WOOD RODGERS, INC TITLE TO THE LAND INCLUDED IN THIS FINAL MAP BEING VESTED AS PER CERTIFICATE NO ON FILE IN THIS OFFICE.

RECORDER OF SACRAMENTO COUNTY DOCUMENT NO
STATE OF CALIFORNIA

BY DEPUTY FEE \$

SUBDIVISION NO. 04-764.03
THE GROVE AT LAGUNA RIDGE
VILLAGE 3
BEING A PORTION OF AREA 4 OF THAT CERTAIN BOUNDARY LINE ADJUSTMENT RECORDED IN BOOK 20060510, AT PAGE 2412, OFFICIAL RECORDS OF SACRAMENTO COUNTY CITY OF ELK GROVE COUNTY OF SACRAMENTO, STATE OF CALIFORNIA



JULY 2006
Sheet 1 of 10
1081 059

BENEFICIARY'S STATEMENT

FIRST BANK, A MISSOURI CORPORATION, DOING BUSINESS AS FIRST BANK AND TRUST, AS BENEFICIARY UNDER DEED OF TRUST RECORDED MAY 31, 2006 IN BOOK 20060531, AT PAGE 1874, OFFICIAL RECORDS OF SACRAMENTO COUNTY, HEREBY CONSENT TO THE PREPARATION AND RECORDATION OF THIS MAP.

BY: [Signature] BY: Debra L. Kramer
PRINT: G. A. K... PRINT: Debra L. Kramer
TITLE: Executive Vice President TITLE: Vice President

NOTARY'S ACKNOWLEDGMENT

STATE OF California }
COUNTY OF Placer } ss

ON THE 28th DAY OF June, 2008, BEFORE ME, Patricia J. Carlsen, A NOTARY PUBLIC IN AND FOR SAID COUNTY AND STATE, PERSONALLY APPEARED, Gary M. Sanders

PERSONALLY KNOWN TO ME OR
 PROVED TO ME ON THE BASIS OF SATISFACTORY EVIDENCE TO BE THE PERSON WHOSE NAME IS SUBSCRIBED TO THE WITHIN INSTRUMENT AND ACKNOWLEDGED TO ME THAT HE/SHE EXECUTED THE SAME IN HIS/HER AUTHORIZED CAPACITY, AND THAT BY HIS/HER SIGNATURE ON THE INSTRUMENT THE PERSON, OR THE ENTITY ON BEHALF OF WHICH THE PERSON ACTED, EXECUTED THE INSTRUMENT.

WITNESS MY HAND: Patricia J. Carlsen
PRINTED NAME: Patricia J. Carlsen

MY PRINCIPAL PLACE OF BUSINESS IS THE
COUNTY OF: Placer

MY COMMISSION EXPIRES: Feb. 7, 2010
MY COMMISSION NO.: 1637331

NOTARY'S ACKNOWLEDGMENT

STATE OF California }
COUNTY OF Placer } ss

ON THE 28th DAY OF June, 2008, BEFORE ME, Patricia J. Carlsen, A NOTARY PUBLIC IN AND FOR SAID COUNTY AND STATE, PERSONALLY APPEARED, Debra L. Kramer

PERSONALLY KNOWN TO ME OR
 PROVED TO ME ON THE BASIS OF SATISFACTORY EVIDENCE TO BE THE PERSON WHOSE NAME IS SUBSCRIBED TO THE WITHIN INSTRUMENT AND ACKNOWLEDGED TO ME THAT HE/SHE EXECUTED THE SAME IN HIS/HER AUTHORIZED CAPACITY, AND THAT BY HIS/HER SIGNATURE ON THE INSTRUMENT THE PERSON, OR THE ENTITY ON BEHALF OF WHICH THE PERSON ACTED, EXECUTED THE INSTRUMENT.

WITNESS MY HAND: Patricia J. Carlsen
PRINTED NAME: Patricia J. Carlsen

MY PRINCIPAL PLACE OF BUSINESS IS THE
COUNTY OF: Placer

MY COMMISSION EXPIRES: Feb. 7, 2010
MY COMMISSION NO.: 1637331

SUBDIVISION NO. 04-764.03
THE GROVE AT LAGUNA RIDGE
VILLAGE 3

BEING A PORTION OF AREA 4 OF THAT CERTAIN BOUNDARY LINE
ADJUSTMENT RECORDED IN BOOK 20060530, AT PAGE 2412,
OFFICIAL RECORDS OF SACRAMENTO COUNTY
CITY OF ELK GROVE
COUNTY OF SACRAMENTO, STATE OF CALIFORNIA


WOOD RODGERS
ENGINEERING • SURVEYING • PLANNING • SURVEYING
3301 C St., Ste. 100-B Tel 916.341.7760
Sacramento, CA 95816 Fax 916.341.7767

JULY 2006
Sheet 2 of 10
(161) 059

FOUND 1-1/2" I.P.
WITH BRASS DISK
PER (4) STAMPED

FOUND 1-1/2" I.P.
WITH BRASS DISK
PER (4) STAMPED

FOUND 1-1/2" I.P.
WITH BRASS DISK
PER (4) STAMPED

(N88°41'08"E 2639 43')(19)
(N89°41'10"E 2639 33')(17)
(N88°41'33"E 2639 41')(4)
(N88°41'10"E 2639 37')(2)
(N88°37'37"E 2639 41')

(N89°46'53"W 2646 29')(6)
(N89°46'40"W 2646 24')(6)
(N89°50'06"W 2646 27')(3)
(N89 46 53"W 2646 24')(2)
(N89 13 10"W 2646 00')(1)
(N89 50 42"W 2646 24')

ELK GROVE

BOULEVARD

BASIS OF BEARINGS
THE BASIS OF BEARINGS FOR THIS SURVEY IS THE CALIFORNIA STATE PLANE COORDINATE SYSTEM, ZONE 2, NAD 83 EPOCH DATE 1997.30, AS MEASURED BETWEEN NGS STATION "ESCHINGER", 1ST ORDER AND NGS STATION "KELLER", 1ST ORDER. SAID BEARING IS N 20°56'36" W. DISTANCES SHOWN ARE GROUND BASED.

- LEGEND**
- SET 5/8" REBAR WITH CAP L.S. 7944 AT ALL FRONT LOT CORNERS, ALL REAR LOT CORNERS AND ALL ANGLE POINTS ALONG REAR LOT LINES OR 1" BRASS DISK L.S. 7944 AT 1' PROJECTION OF PROPERTY LINE ONTO SIDEWALK FOR FRONT CORNERS. (REAR LOT CORNERS ADJACENT TO A SOUNDWALL WILL BE A TWO FOOT REFERENCE POINT.)
 - ⊗ SET 2 1/2" BRASS DISK IN MONUMENT WELL STAMPED L.S. 7944
 - ⊙ SET 3/4" IRON PIPE WITH PLUG STAMPED L.S. 7944
 - ⊕ SECTION CORNER AS NOTED
 - ⊖ ONE-QUARTER CORNER AS NOTED
 - ⊙ CENTER OF SECTION AS NOTED
 - △ NGS STATION
 - AC ACRES
 - BLA BOUNDARY LINE ADJUSTMENT
 - I.P. IRON PIPE
 - OA OVERALL
 - O.R. OFFICIAL RECORDS OF SACRAMENTO COUNTY
 - P.E. PEDESTRIAN EASEMENT
 - P.U.E. PUBLIC UTILITY EASEMENT
 - S.F. SQUARE FEET
 - (R) RADIAL LINE
 - (S) SHEET INDEX

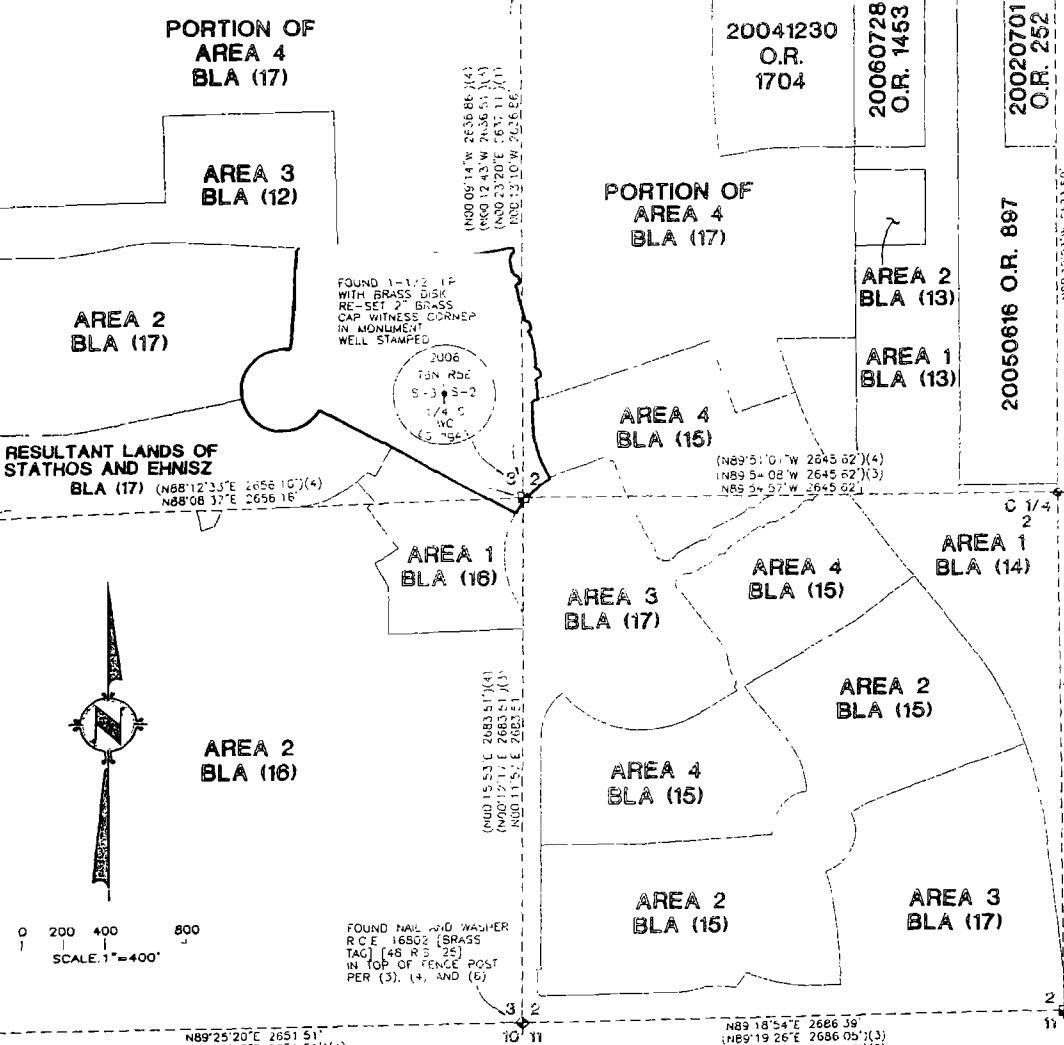
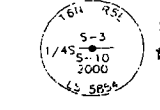
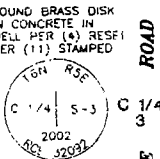
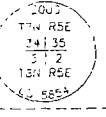
- NOTES**
1. ALL CURVES DIMENSIONED WITH RADIUS, DELTA AND ARC LENGTH ALL DISTANCES SHOWN ARE EXPRESSED IN FEET AND DECIMALS THEREOF.
 2. AGRICULTURAL PROPERTIES AND USES SURROUNDING THIS PROPERTY MAY CONTINUE IN PERPETUITY, SUBJECT TO THE PROVISIONS OF THE CITY'S ADOPTED "RIGHT TO FARM ORDINANCE". A NOTICE TO PURCHASER WILL BE RECORDED PRIOR TO THE SALE OF LOTS.

**SUBDIVISION NO. 04-764.03
THE GROVE AT LAGUNA RIDGE
VILLAGE 3**

BEING A PORTION OF AREA 4 OF THAT CERTAIN BOUNDARY LINE ADJUSTMENT RECORDED IN BOOK 20060530, AT PAGE 2412, OFFICIAL RECORDS OF SACRAMENTO COUNTY, CITY OF ELK GROVE, COUNTY OF SACRAMENTO, STATE OF CALIFORNIA

WOOD RODGERS
ENGINEERING - MAPPING - PLANNING - SURVEYING
3301 C St., Slog 100-B Tel 916.341.7760
Sacramento, CA 95816 Fax 916.341.7767

JULY 2006
Sheet 3 of 10
1081 US9

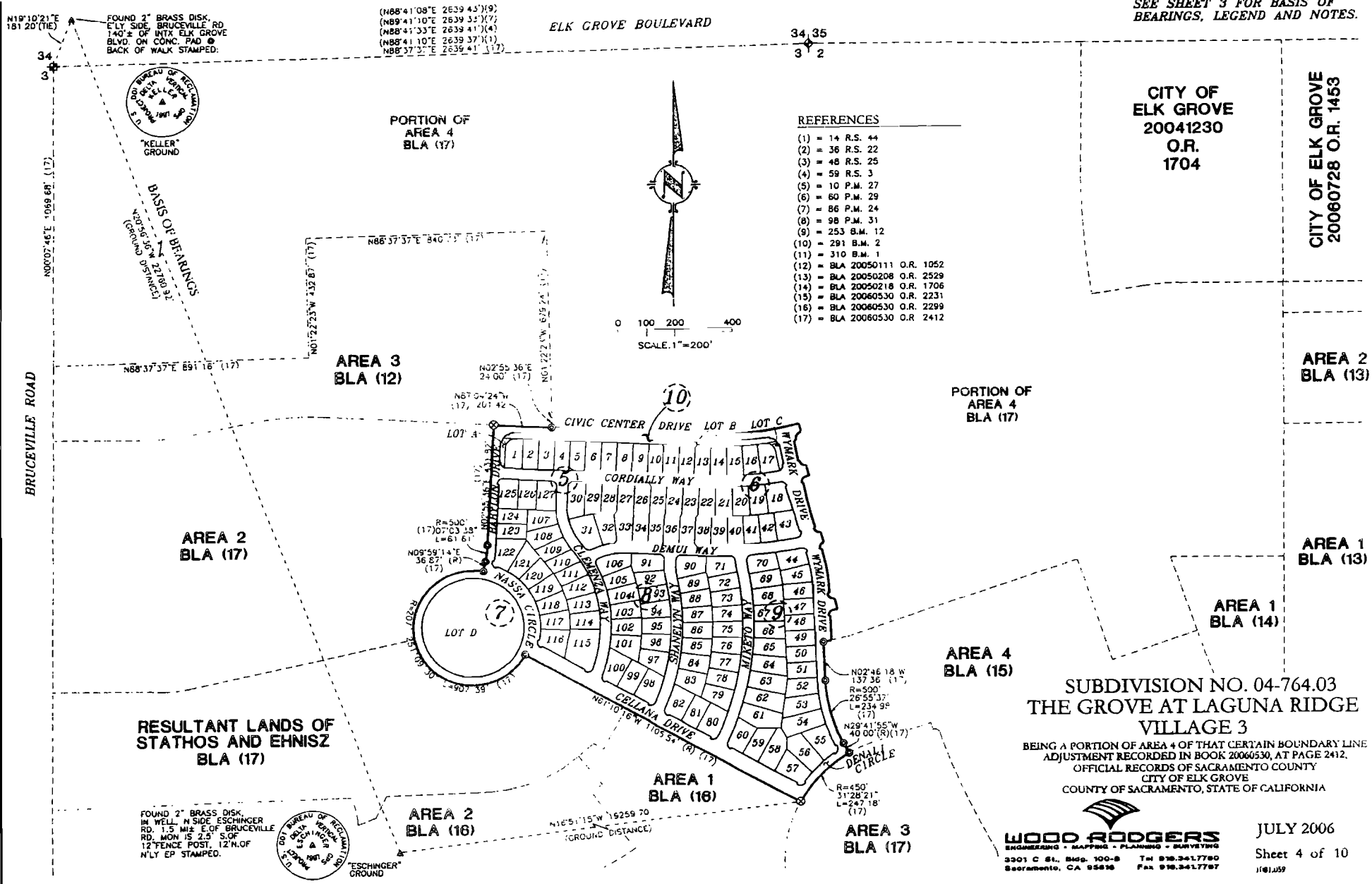


0 200 400 800
SCALE: 1"=400'

FOUND NAIL AND WASHER
R.C.E. 16802 (BRASS
TAG) (48 R.S. 25)
IN TOP OF FENCE POST
PER (3), (4), AND (6)

FOUND 2" OPEN I.P.
MARKING THE SOUTH
CORNER OF SECTION 2
TOWNSHIP 6 NORTH
RANGE 5 EAST PER (6)

SEE SHEET 3 FOR BASIS OF BEARINGS, LEGEND AND NOTES.



REFERENCES

- (1) = 14 R.S. 44
- (2) = 36 R.S. 22
- (3) = 48 R.S. 26
- (4) = 59 R.S. 3
- (5) = 10 P.M. 27
- (6) = 60 P.M. 29
- (7) = 86 P.M. 24
- (8) = 98 P.M. 31
- (9) = 253 B.M. 12
- (10) = 291 B.M. 2
- (11) = 310 B.M. 1
- (12) = BLA 20050111 O.R. 1052
- (13) = BLA 20050208 O.R. 2529
- (14) = BLA 20050218 O.R. 1706
- (15) = BLA 20060530 O.R. 2231
- (16) = BLA 20060530 O.R. 2299
- (17) = BLA 20060530 O.R. 2412

SUBDIVISION NO. 04-764.03
THE GROVE AT LAGUNA RIDGE
VILLAGE 3
 BEING A PORTION OF AREA 4 OF THAT CERTAIN BOUNDARY LINE
 ADJUSTMENT RECORDED IN BOOK 20060530, AT PAGE 2412.
 OFFICIAL RECORDS OF SACRAMENTO COUNTY
 CITY OF ELK GROVE
 COUNTY OF SACRAMENTO, STATE OF CALIFORNIA

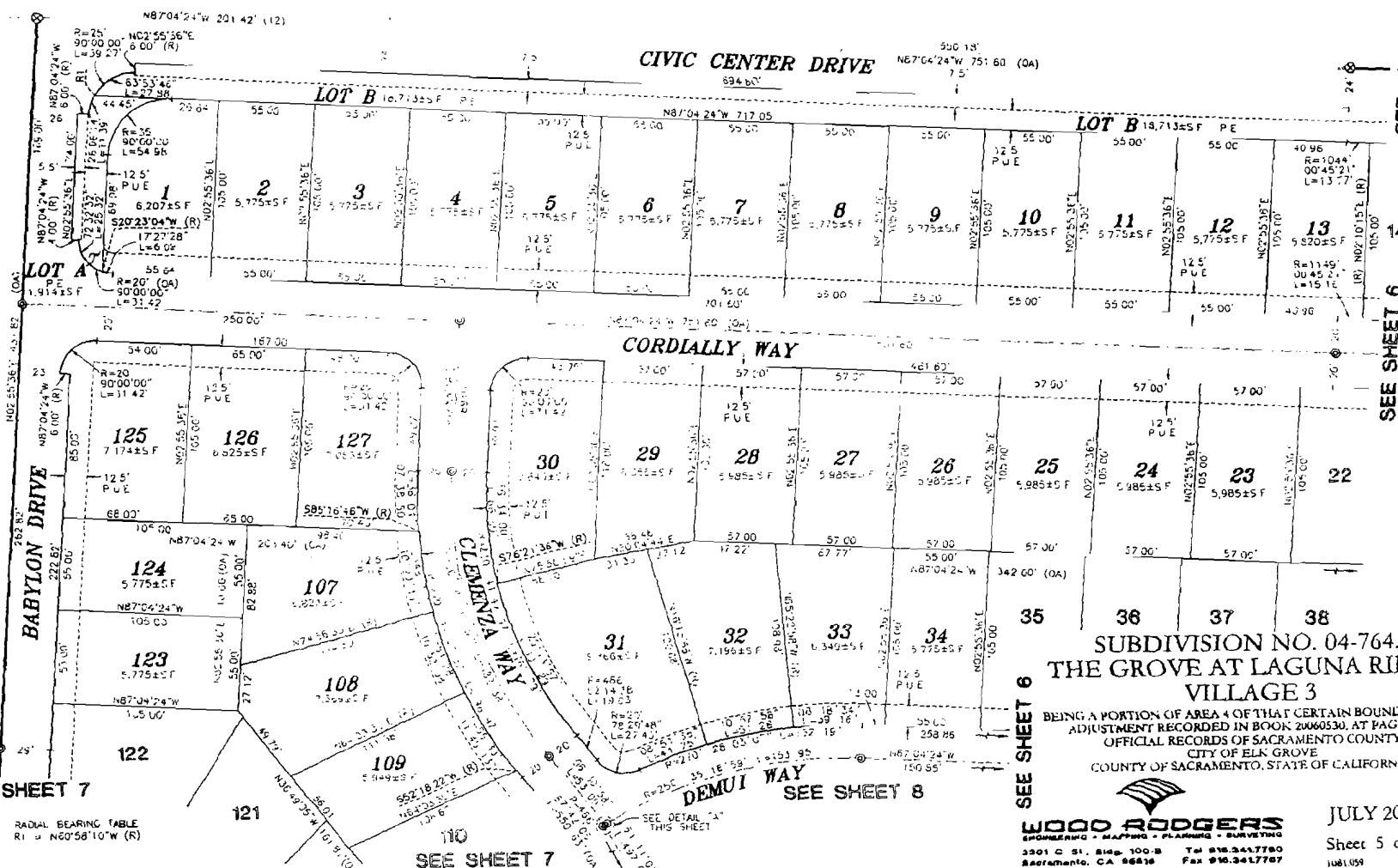
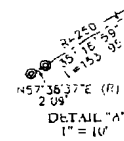
WOOD RODGERS
 ENGINEERING • MAPPING • PLANNING • SURVEYING
 3301 C St., Ste. 100-B T 916-341-7790
 Sacramento, CA 95816 Fax 916-341-7797

JULY 2006
 Sheet 4 of 10
 J181J59

SEE SHEET 3 FOR BASIS OF BEARINGS, LEGEND AND NOTES.

AREA 3
BLA (12)

PORTION OF
AREA 4
BLA (17)
SEE SHEET 4



SEE SHEET 6

SEE SHEET 6

SEE SHEET 6

SEE SHEET 7

SEE SHEET 7

SEE SHEET 8

SUBDIVISION NO. 04-764.03
THE GROVE AT LAGUNA RIDGE
VILLAGE 3

BEING A PORTION OF AREA 4 OF THAT CERTAIN BOUNDARY LINE
ADJUSTMENT RECORDED IN BOOK 2466530, AT PAGE 2412,
OFFICIAL RECORDS OF SACRAMENTO COUNTY
CITY OF ELK GROVE
COUNTY OF SACRAMENTO, STATE OF CALIFORNIA

WOOD RODGERS
ENGINEERING • MAPING • PLANNING • SURVEYING
3301 C ST., SUITE 100-B TAMHLE, CALIFORNIA 95834
SACRAMENTO, CA 95816 TEL: 916.341.7700 FAX: 916.341.7707

JULY 2006
Sheet 5 of 10
1081059

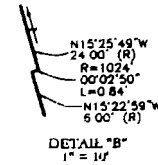


RADIAL BEARING TABLE
R1 = N07°58'10"W (R)

SCALE: 1" = 40'

SEE SHEET 3 FOR BASIS OF BEARINGS, LEGEND AND NOTES.

PORTION OF AREA 4
BLA 17
SEE SHEET 4



RADIAL BEARING TABLE

R2 = N54°05'49"E (R)	R=25'
R3 = S10°24'49"E (R)	R=1044'
R4 = S12°20'12"E (R)	
R5 = S12°11'26"E (R)	
R6 = S08°03'57"E (R)	

CURVE TABLE

C1 = R=1044'	DELTA=02°20'52"	L=42.78'
C2 = R=25'	DELTA=24°34'34"	L=10.72'

PORTION OF AREA 4
BLA 17
SEE SHEET 4



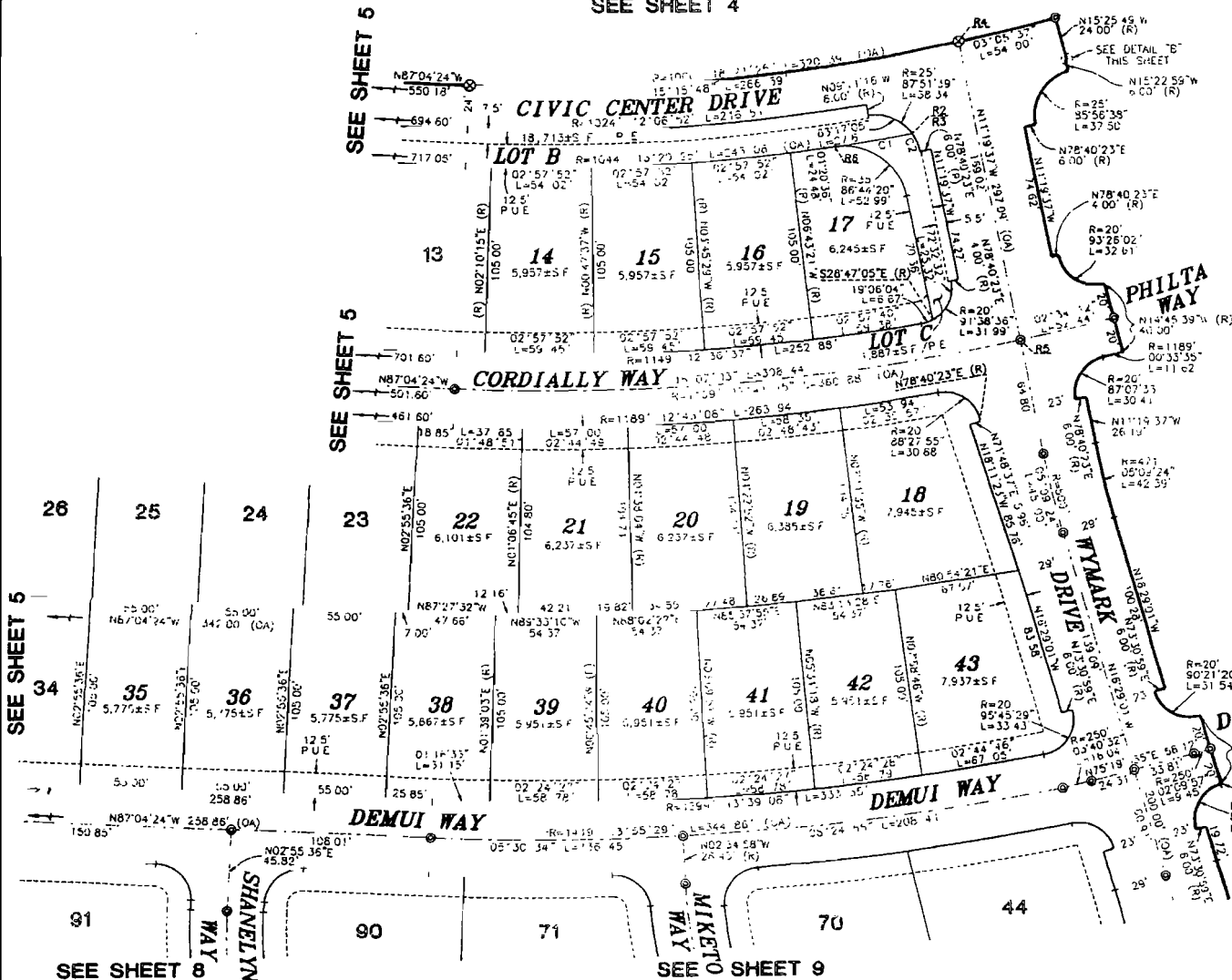
0 20 40 80
SCALE: 1"=40'

SUBDIVISION NO. 04-764.03
THE GROVE AT LAGUNA RIDGE
VILLAGE 3

BEING A PORTION OF AREA 4 OF THAT CERTAIN BOUNDARY LINE
ADJUSTMENT RECORDED IN BOOK 20060530, AT PAGE 2412,
OFFICIAL RECORDS OF SACRAMENTO COUNTY
CITY OF ELK GROVE
COUNTY OF SACRAMENTO, STATE OF CALIFORNIA

WOOD ROGERS
ENGINEERS - MAPPERS - PLANNERS - SURVEYORS
3301 C ST., SUITE 100-B TEL 916.241.7760
SACRAMENTO, CA 95816 FAX 916.241.7767

JULY 2006
Sheet 6 of 10
10611259

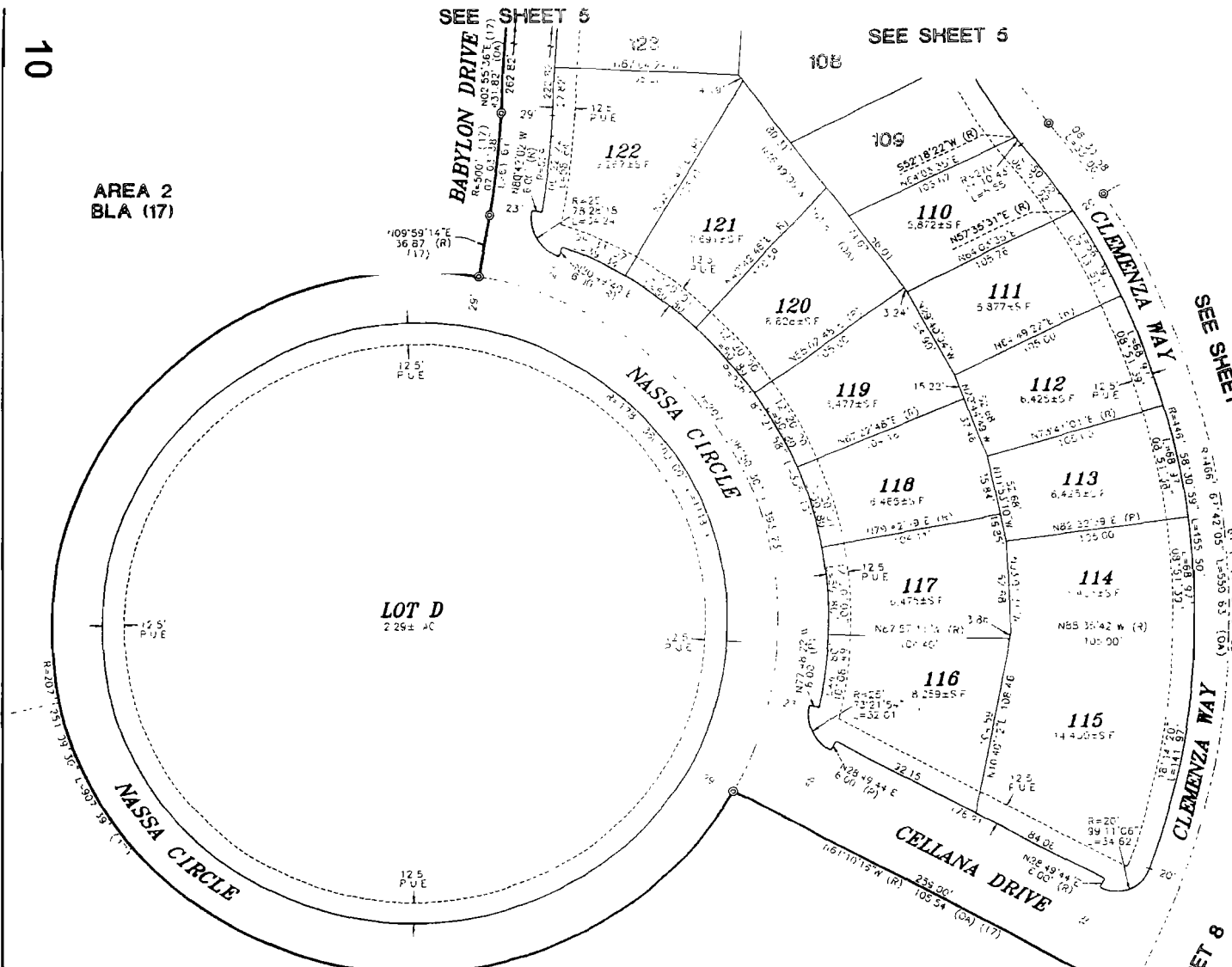


AREA 2
BLA (17)

SEE SHEET 5

SEE SHEET 5

SEE SHEET 3 FOR BASIS OF
BEARINGS, LEGEND AND NOTES.



RESULTANT LANDS OF
STATHOS AND EHNISZ
BLA (17)



0 20 40 80
SCALE 1"=40'

SUBDIVISION NO. 04-764.03
THE GROVE AT LAGUNA RIDGE
VILLAGE 3

BEING A PORTION OF AREA 4 OF THAT CERTAIN BOUNDARY LINE
ADJUSTMENT RECORDED IN BOOK 20060530, AT PAGE 2412,
OFFICIAL RECORDS OF SACRAMENTO COUNTY,
CITY OF ELK GROVE
COUNTY OF SACRAMENTO, STATE OF CALIFORNIA

WOOD RODGERS
ENGINEERING • MAPPING • PLANNING • SURVEYING
3301 C St., Room 100-B Tel 916.341.7760
Sacramento, CA 95816 Fax 916.341.7767

JULY 2006
Sheet 7 of 10
1081/059

SEE SHEET 3 FOR BASIS OF BEARINGS, LEGEND AND NOTES.

SEE SHEET 9

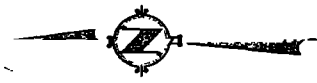
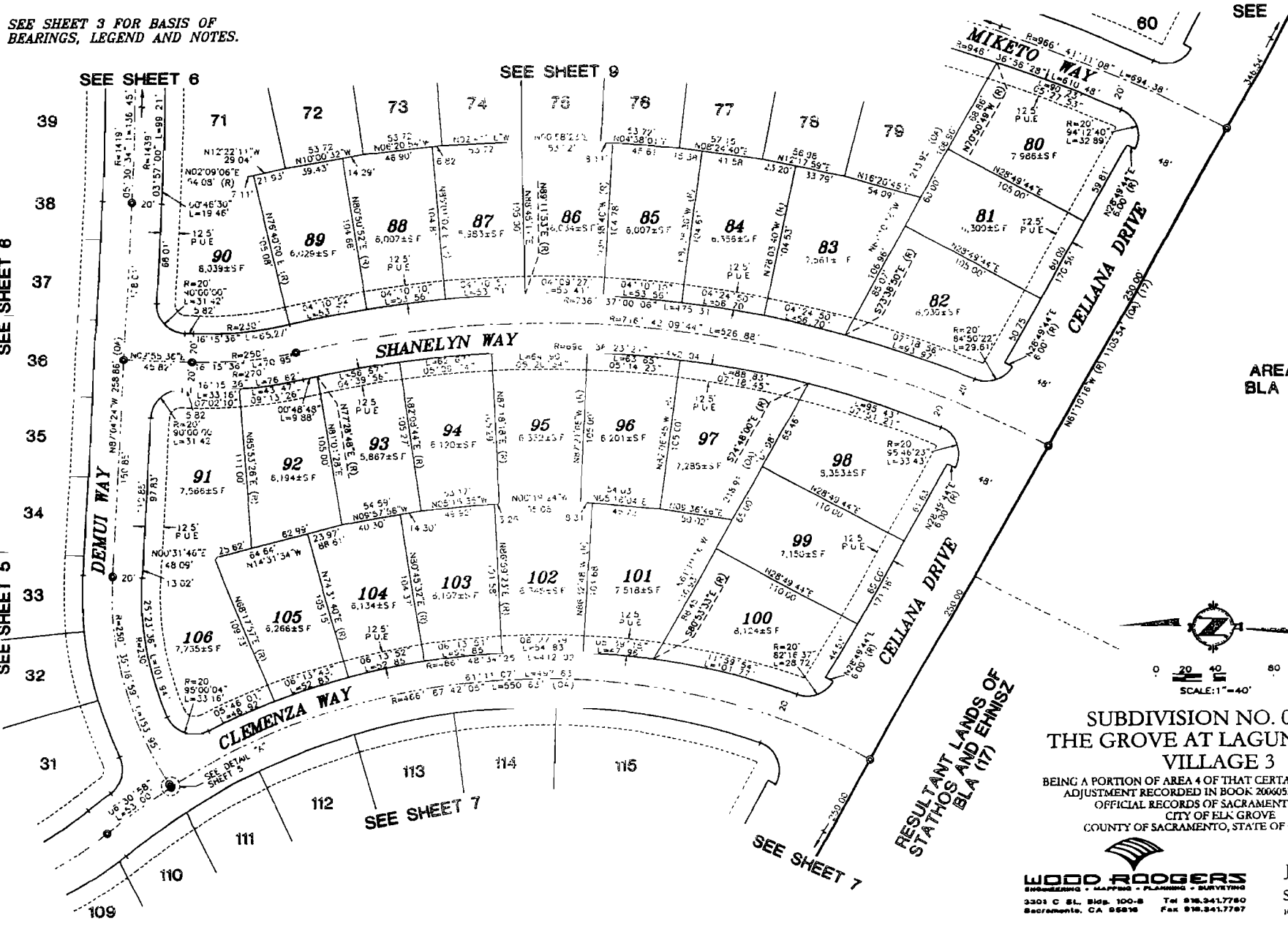
SEE SHEET 6

SEE SHEET 8

SEE SHEET 6

SEE SHEET 5

11



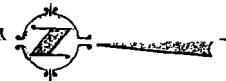
0 20 40 80
SCALE: 1" = 40'

**SUBDIVISION NO. 04-764.03
THE GROVE AT LAGUNA RIDGE
VILLAGE 3**

BEING A PORTION OF AREA 4 OF THAT CERTAIN BOUNDARY LINE
ADJUSTMENT RECORDED IN BOOK 20060530, AT PAGE 2412,
OFFICIAL RECORDS OF SACRAMENTO COUNTY
CITY OF ELK GROVE
COUNTY OF SACRAMENTO, STATE OF CALIFORNIA

WOOD ROGERS
ENGINEERING • MAPPING • PLANNING • SURVEYING
2301 C ST., SUITE 100-B TEL 916.341.7760
SACRAMENTO, CA 95816 FAX 916.341.7767

JULY 2006
Sheet 8 of 10
1081.029



SCALE 1"=40'

PORTION OF AREA 4
BLA (17)
SEE SHEET 4

AREA 4
BLA (15)

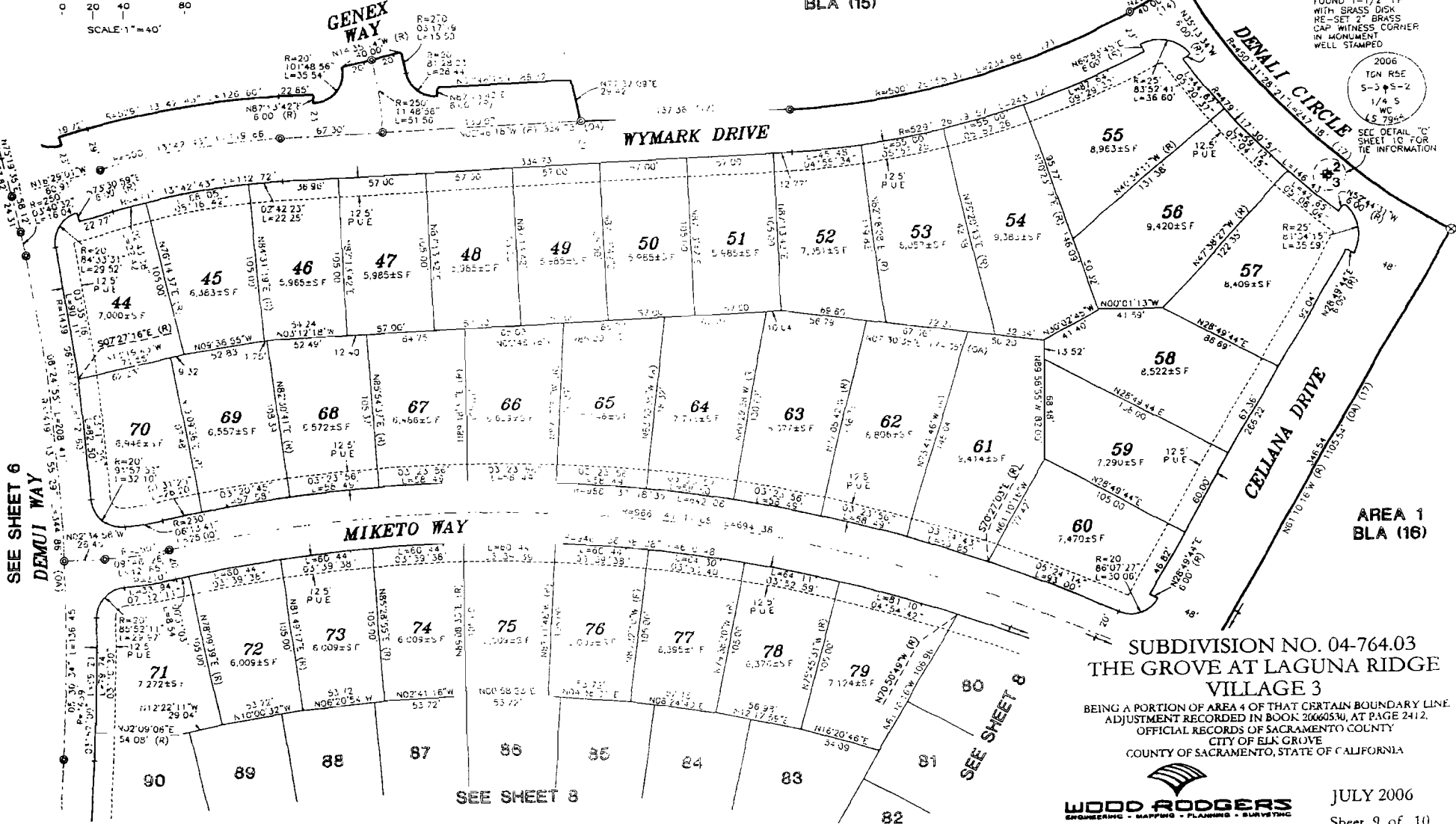
SEE SHEET 3 FOR BASIS OF
BEARINGS, LEGEND AND NOTES.

AREA 3
BLA (18)

FOUND 1-1/2" IF
WITH BRASS DISK
RE-SET 2" BRASS
CAP WITNESS CORNER
IN MONUMENT
WELL STAMPED

2006
IGN RSE
S-3 S-2
1/4 S
WC
LS 79"

SEE DETAIL "C"
SHEET 10 FOR
THE INFORMATION



SEE SHEET 6
DEMUI WAY

SEE SHEET 8

SEE SHEET 8

**SUBDIVISION NO. 04-764.03
THE GROVE AT LAGUNA RIDGE
VILLAGE 3**

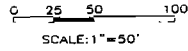
BEING A PORTION OF AREA 4 OF THAT CERTAIN BOUNDARY LINE
ADJUSTMENT RECORDED IN BOOK 20660530, AT PAGE 2412.
OFFICIAL RECORDS OF SACRAMENTO COUNTY
CITY OF ELK GROVE
COUNTY OF SACRAMENTO, STATE OF CALIFORNIA

WOOD RODGERS
ENGINEERS - SURVEYORS - PLANNERS - DESIGNERS
3301 C St., Ste. 100-S Tel 916.341.7780
Sacramento, CA 95816 Fax 916.341.7787

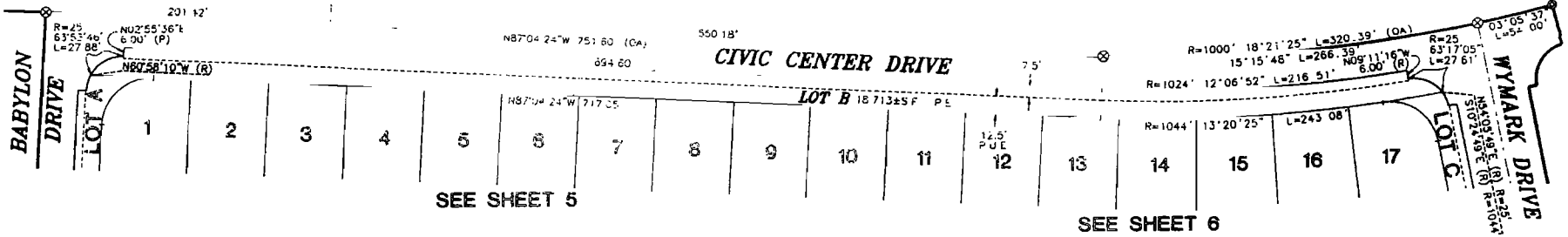
JULY 2006
Sheet 9 of 10
10/1/09

SEE SHEET 3 FOR BASIS OF BEARINGS, LEGEND AND NOTES.

AREA 3
BLA (12)

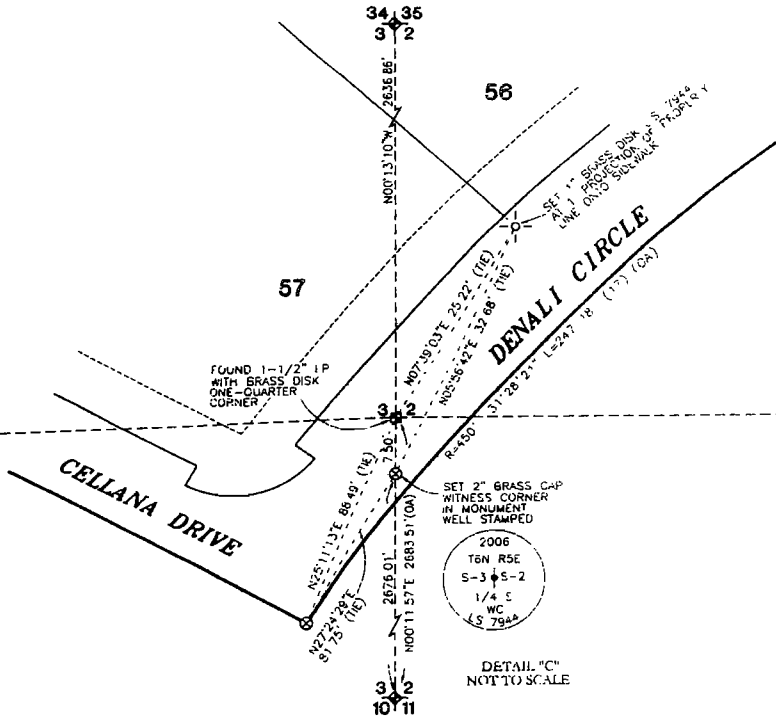


PORTION OF
AREA 4
BLA (17)
SEE SHEET 4



SEE SHEET 5

SEE SHEET 6



DETAIL "C"
NOT TO SCALE



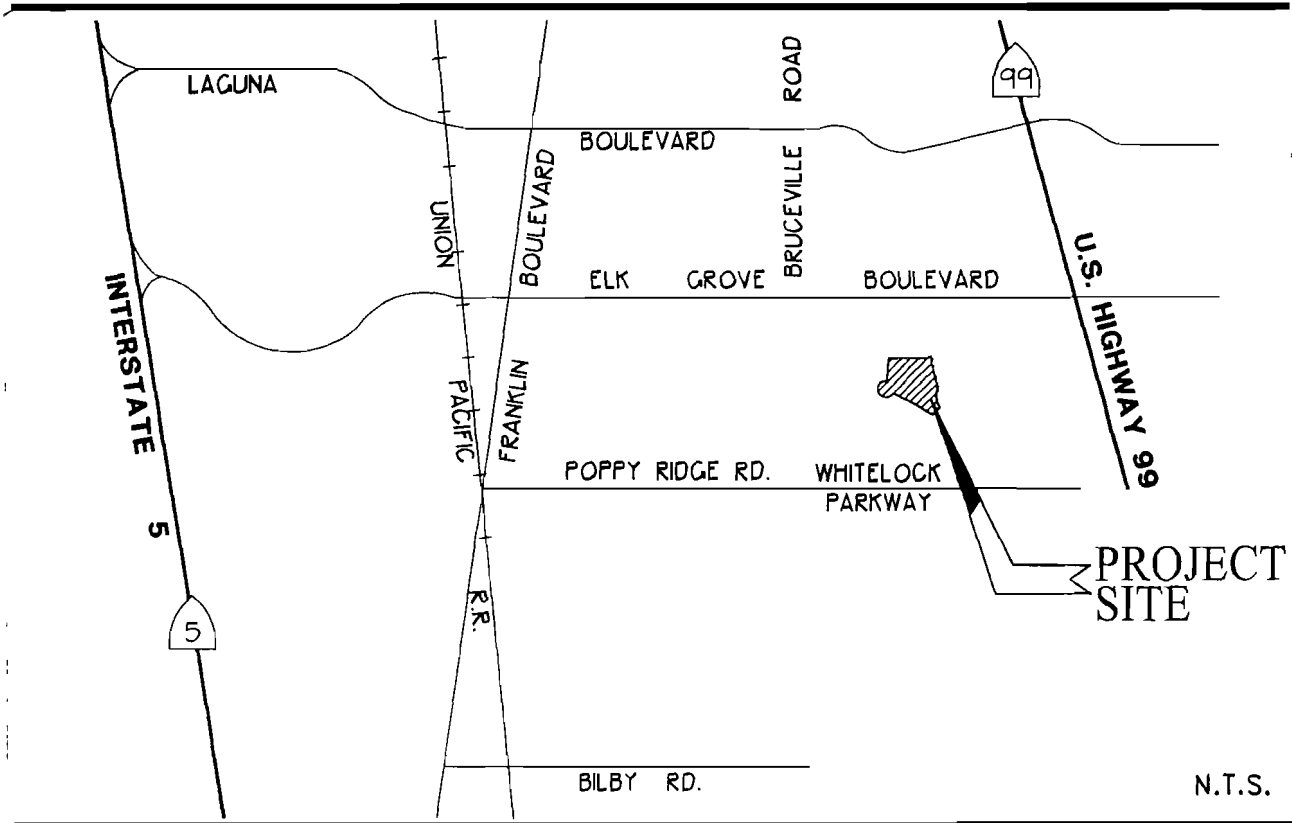
SUBDIVISION NO. 04-764.03
THE GROVE AT LAGUNA RIDGE
VILLAGE 3

BEING A PORTION OF AREA 4 OF THAT CERTAIN BOUNDARY LINE
ADJUSTMENT RECORDED IN BOOK 20060530, AT PAGE 2412,
OFFICIAL RECORDS OF SACRAMENTO COUNTY
CITY OF ELK GROVE
COUNTY OF SACRAMENTO, STATE OF CALIFORNIA

WOOD RODGERS
ENGINEERING • MAPPING • PLANNING • SURVEYING
3301 C St., Bldg. 100-B Tel 916.341.7760
Sacramento, CA 95816 Fax 916.341.7767

JULY 2006
Sheet 10 of 10
1181.059

THE GROVE AT LAGUNA RIDGE
VILLAGE 3
VICINITY MAP
PROJECT NO. 04764.03
CITY OF ELK GROVE
COUNTY OF SACRAMENTO STATE OF CALIFORNIA



VICINITY MAP



WOOD RODGERS
ENGINEERING • MAPPING • PLANNING • SURVEYING

3301 C St., Bldg. 100-B Tel 916.341.7760
Sacramento, CA 95816 Fax 916.341.7767


**CERTIFICATION
ELK GROVE CITY COUNCIL RESOLUTION NO. 2006-283**

STATE OF CALIFORNIA)
COUNTY OF SACRAMENTO) ss
CITY OF ELK GROVE)

I, Peggy E. Jackson, City Clerk of the City of Elk Grove, California, do hereby certify that the foregoing resolution was duly introduced, approved, and adopted by the City Council of the City of Elk Grove at a regular meeting of said Council held on November 8, 2006 by the following vote:

AYES : COUNCILMEMBERS: Soares, Scherman, Briggs, Cooper, Leary
NOES : COUNCILMEMBERS: None
ABSTAIN : COUNCILMEMBERS: None
ABSENT: COUNCILMEMBERS: None





**Peggy E. Jackson, City Clerk
City of Elk Grove, California**